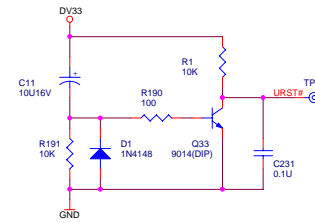
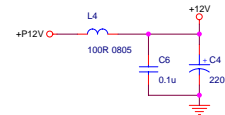
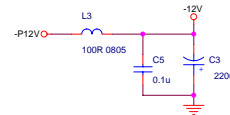
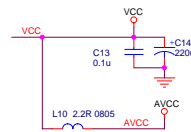
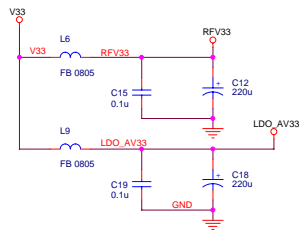
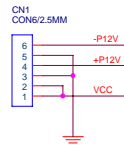


1389EM6-11.1

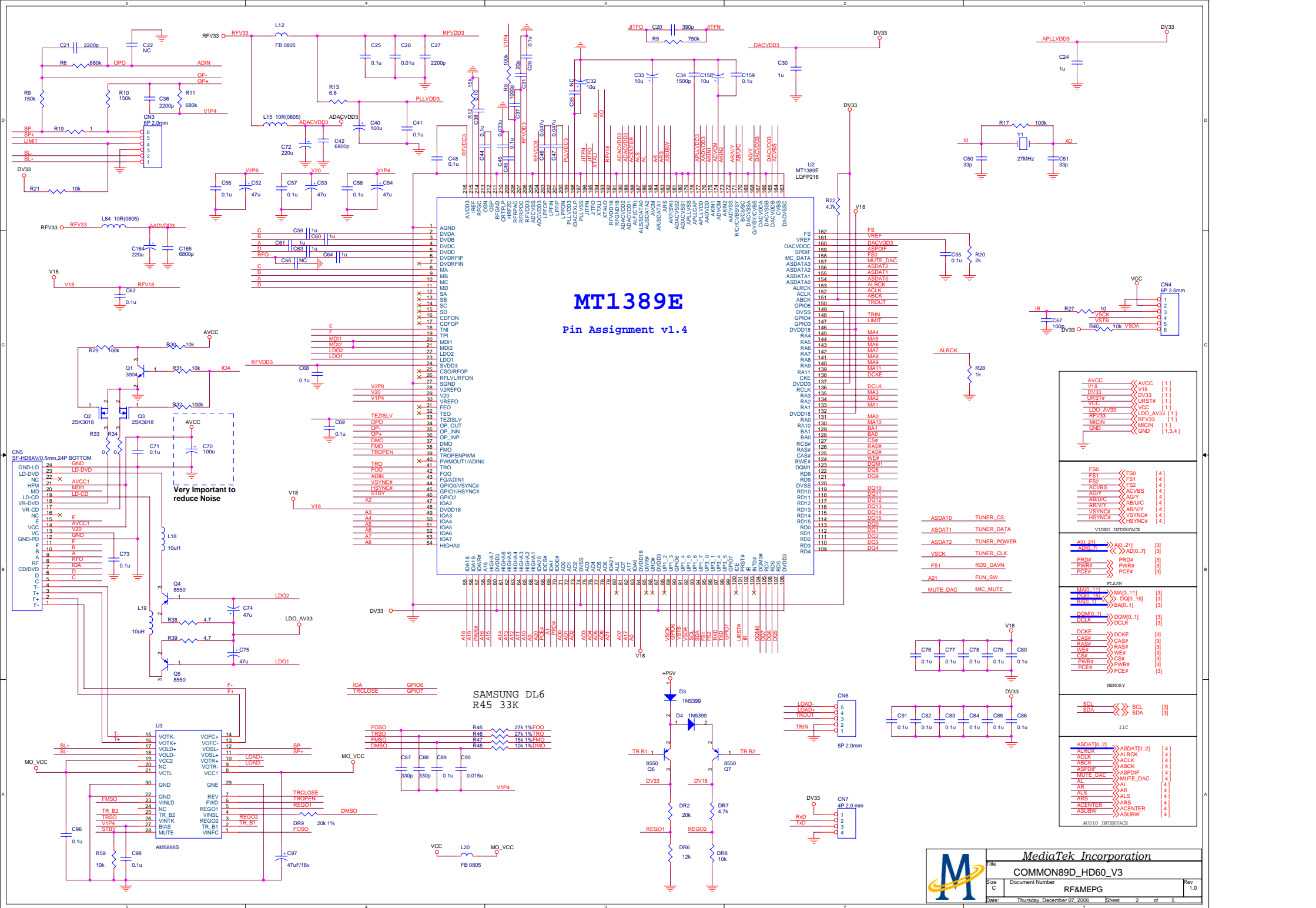
MT1389E DVD Demo Board for SANYO HD60 PUH

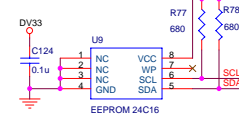
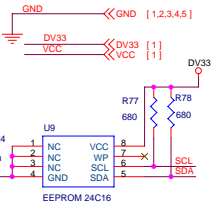
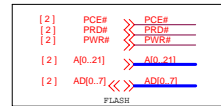
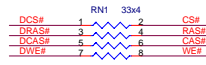
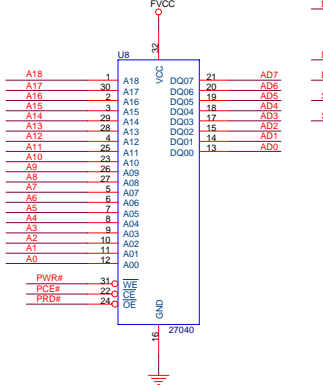
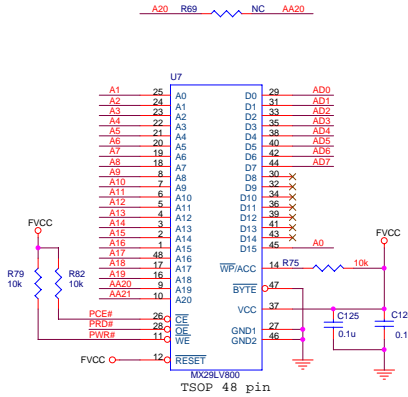
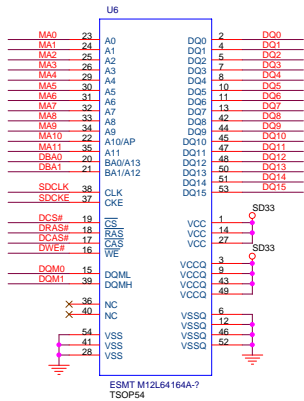
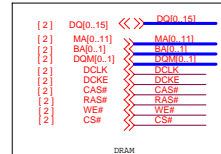
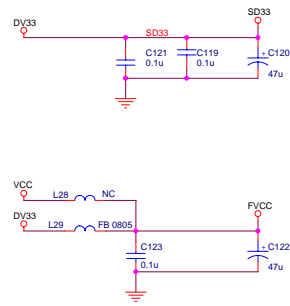
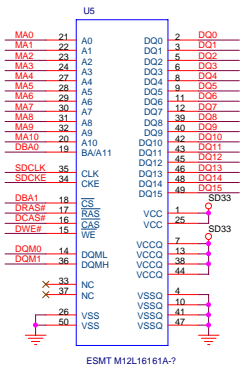
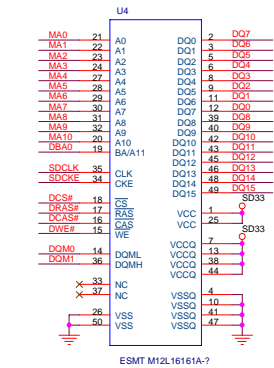
- 1 INDEX & POWER, RESET
- 2 RF / SERVO /MPEG - MT1389D
- 3 MEMORY - SDRAM, FLASH/EEPROM
- 4 VIDEO FILTER
- 5 AUDIO FILTER

NAME	TYPE	DEVICE
VCC	Digital 5V	SUPPLY
DV33	Digital 3.3V	MT1389E
RFV33	Servo 3.3V	MT1389E
LDO_AV33	Laser Diode 3.3V	
AVCC	RF 5V	PICKUP HEADER
V18	Digital 1.8V	MT1389E
SD33	Digital 3.3V	SDRAM
+12V	Audio +12V	OP AMP.
-12V	Audio -12V	OP AMP.



- URST# >>> URST# [2]
- V18 >>> V18 [2]
- DV33 >>> DV33 [2,3,4]
- VCC >>> VCC [2,3,4]
- AVCC >>> AVCC [2]
- LDO_AV33 >>> LDO_AV33 [2]
- RFV33 >>> RFV33 [2]
- VCC_AUDIO >>> VCC_AUDIO [4]
- +12V >>> +12V [4]
- 12V >>> -12V [4]
- MICIN >>> MICIN [2]
- GND >>> GND [2,3,4]





- [1] -12V >> -12V
 [1] +12V >> +12V
 [1] VCC >> VCC
 [1] VCC_AUDIO >> VCC_AUDIO
 [1,2,3,4] GND >> GND
- AR >> RMAIN
 AL >> LMAIN
 ARS >> RREAR
 ALS >> LREAR
 ASUBW >> LFE
 ACENTER >> CENT
- [2] ASPDIF >> ASPDIF
 [2] AL >> AL
 [2] AR >> AR
 [2] ALS >> ALS
 [2] ARS >> ARS
 [2] ACENTER >> ACENTER
 [2] ASUBW >> ASUBW
 [2] ACVBS >> ACVBS
 [2] AG/Y >> AG/Y
 [2] AB/U/C >> AB/U/C
 [2] AR/V/Y >> AR/V/Y
 [2] VSYNC# >> VSYNC#
 [2] HSYNC# >> HSYNC#
 [2] FS0 >> FS0
 [2] FS2 >> FS2

